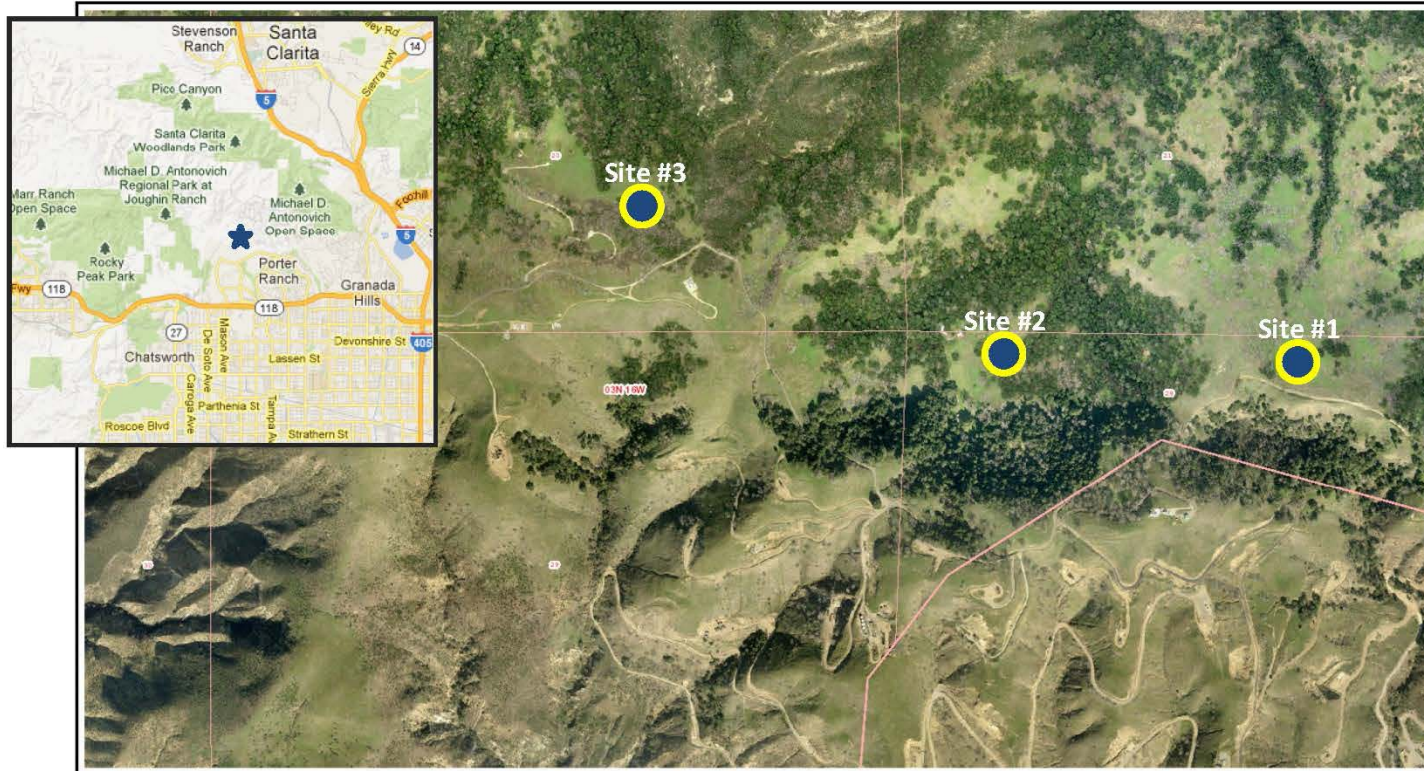
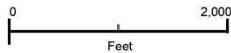


Figure 2-1 Proposed Project Location



Item 9(a)
SMMC
6-1-2015

North Aliso Canyon Project Locations



Printed: Apr 10, 2015

Copyright 2013 - Los Angeles County Department of Regional Planning, GIS Section. Note: This map represents a quick representation of spatial imagery or vector layers using GIS-NET3. The map should be interpreted in accordance with the GIS-NET3 Public disclaimer statement. Printed with permission from the Los Angeles County Dept. of Regional Planning. All rights reserved.



Source: Termo, LA County GIS-NET3